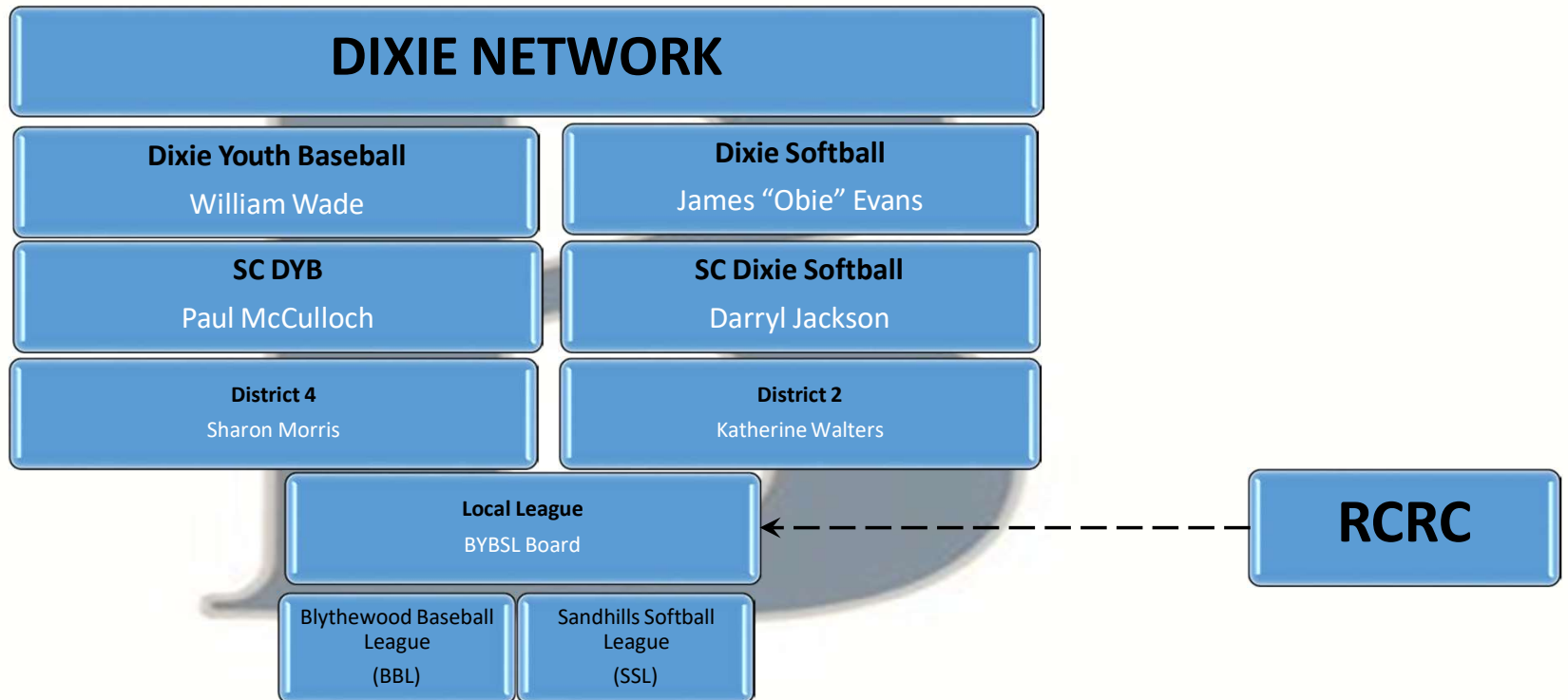




**Spring 2025**

**Parents Info/FAQ**

# About Dixie Youth



# BYBSL Board

- 
- A large, stylized, light blue letter 'B' with a white outline and a subtle drop shadow, serving as a background for the list of board members.
- Doug Pauley– President
  - Karen McKay– Secretary
  - Kaylee Mastrianni– Treasurer
  - David Lorick – BBL Commissioner
  - Dale Dye– SSL Commisioner
  - *OPEN*– Sponsorship Director
  - Tara Hubbard– Uniform Director
  - *OPEN* – Fundraising Director

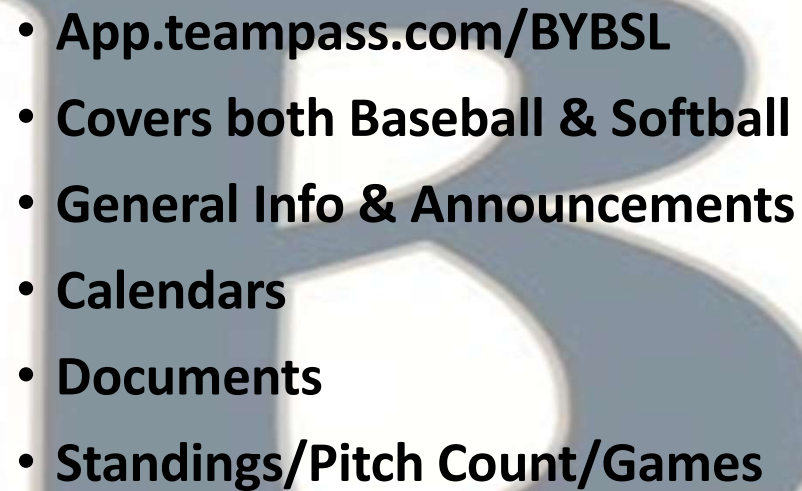
# BBL Board

- David Lorick– BBL Commissioner
  - Kristina Schwarzbauer- Secretary
  - Justin Blackwelder– Player’s Agent
- Corey Green– Director of WeeBall/Rookie Ball
  - Phillip Wilson– Director of Coach’s Pitch
  - Ryan Ferguson– Director of Minors
    - Stephen Shroyer– Director of O-Zone
    - OPEN – Equipment Director
  - Mike Mozdierz – Umpire Director
    - MAL’s – OPEN (5)

# SSL Board

- Dale Dye–SSL Commissioner
- Megan Byrum– Player’s Agent
- Open – Secretary
- Jake Creese – 8U Director
- Jared Davison – 10U Director
- Melissa Henson– 12U Director
- Megan Byrum – Equipment Director
  - Open– Umpire Director
  - Open– Member at Large

# Website

- 
- A large, stylized, blue letter 'B' with a white outline and a drop shadow, serving as a background for the list.
- [App.teampass.com/BYBSL](http://App.teampass.com/BYBSL)
  - Covers both Baseball & Softball
  - General Info & Announcements
  - Calendars
  - Documents
  - Standings/Pitch Count/Games

# Social Media

**Follow us on Facebook**

Blythewood Baseball / Softball League

**Follow us on Facebook**

Sandhills Softball League

# Fundraising

- This helps keep registration costs down.
- Helps with replacing worn equipment and make improvements.

## Raffle Tickets



- Other Prizes to be determined

Goal: 10 tickets /  
player

## Highest Sellers

*Individual per division - \$25 Gift Card to Dick's*



# Fundraising

- Baseball
  - Hat & Jersey
- Softball
  - Jersey & Socks
- Dick's Sporting Goods as the Supplier – Corporate Sponsor!

# B



# General Info

- **Background Checks & Code of Conduct Forms** – Team moms, coaches, any on-field helpers!...limits per team will apply as follows (paid by the League):

- WeeBall / RB – 6
- CP / Dar – 5
- Minors / OZ / Ang / PT – 4

- **Workdays**

- TBD – Weeball & Rookie Ball: Blythewood Park
- TBD – All Softball: Kelly Mill
- TBD – Coach's Pitch: Blythewood Park
- TBD – Minors & OZ: Blythewood Park (subject to change)

**\*Background Checks are only good for 1 year.**

# General Info

- **No participation trophies – end of year Sponsor Shirts**
    - WeeBall will receive trophies
    - League winners
  - **Lightning Policy**
  - **All Star**
    - Head Coaches are a division vote and have to be approved by BYBSL Board
    - Assistants appointed by coach but must be approved by the BYBSL Board
  - **Blythewood & North Springs Parks are nicotine free parks**
- 

# Important Dates

- 
- A large, stylized, blue letter 'B' with a white outline and a drop shadow, serving as a background for the list.
- **December 1<sup>st</sup>, 2024- Registration Begins**
    - Early Bird Discount
    - Sibling Discount
  - **March 1, 2025- Opening Ceremonies**
  - **May 9, 2025- Closing Ceremonies**

# Assessments

- **January 25, 2025**
  - 11:00a- OZONE- Field #2
  - 11:00a- MINORS- Field #3
- **February 1, 2025**
  - 10a-11:30a- COACH PITCH (Last Name: A-L)- Field #3
  - 12p-1:30p- COACH PITCH(Last Name: M-Z)- Field #3
  - 11:00a- ROOKIE BALL- Field #1

# Schedules

- Will be available as soon as final numbers are known
  - WeeBall will play primarily on Saturdays
  - Rookie Ball will play some Saturdays
- A .pdf will be on website
- Will populate the calendar and team pages
- Weather updates
  - No decisions before 3:30pm during the week or 8:30am for weekend games.
  - Make up games (if needed) – where schedule allows.

# Sponsors

- Need a team sponsor for every team

- Levels

- Grand Slam = \$2,000
- Home Run = \$1,500
- Triple Play = \$1,000
- All Star Team = \$750
- All Star Banner = \$250
- Team = \$500
- 3 Fence Signs = \$750
- 1 Fence Sign = \$300



See Sponsorship  
Form on Website

# Opening Ceremonies

A large, stylized, blue letter 'B' with a white outline and a slight shadow effect, positioned centrally below the title.



# Local League Rules

- Division specific rules on website – See “Handout” section
- Cages are part of field reservation. Are to be locked when not in use.
- Helmets w/ facemask required for regular season play.
- SOFTBALL ONLY: Field facemasks required.
- Ejections – see policy on website
- NO Hitting balls into the fence. Unless wiffle balls or until designated areas are installed
- Field Lights – Coaches will turn on, timer will turn them off.

# Local League Rules

- **Home Team**

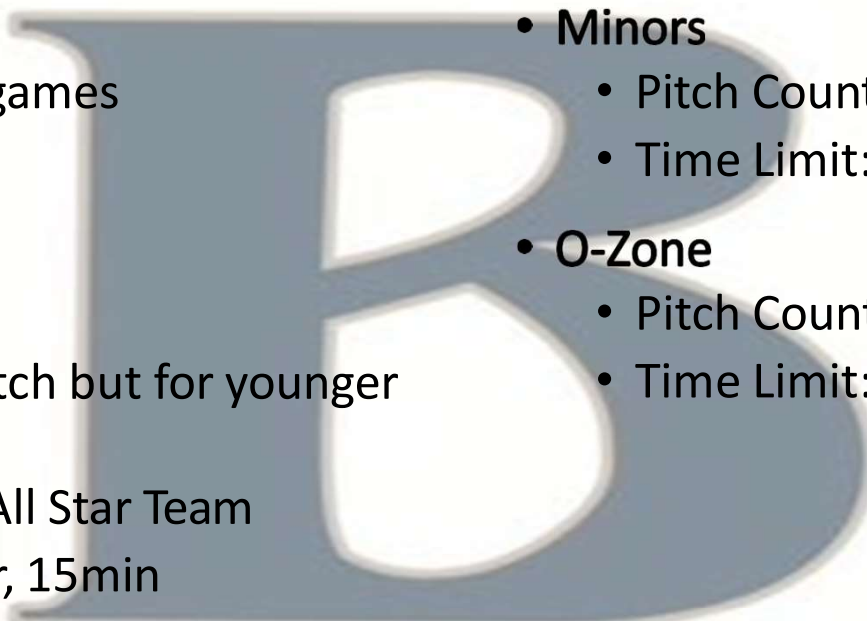
- Field set up
- Returning equipment back to press boxes after last game (mounds & bases)
- Operating Scoreboard

- **Visiting Team**

- Announcing Games
- Raking around batter's box and pitching mound after each game – fill in holes
- Returning field maintenance equipment back to press box afterwards (rakes & shovels)

- **Only 1 coach out of dugout on defense for Minors and OZone**

# Divisions - Baseball

- 
- A large, stylized, blue letter 'B' with a white outline and a slight shadow, positioned in the background of the text.
- **WeeBall**
    - Play Saturday games
    - Tee only
    - Time limit: 1hr
  - **Rookie Ball**
    - Like Coach's Pitch but for younger players
    - Will field and All Star Team
    - Time Limit: 1hr, 15min
  - **Coach's Pitch**
    - Machine Pitch eliminated by DYB
    - Time Limit: 1hr, 15min
  - **Minors**
    - Pitch Count Limits (50/game, 75/wk)
    - Time Limit: 1hr, 20min
  - **O-Zone**
    - Pitch Count Limits (75/game, 100/wk)
    - Time Limit: 1hr, 35min

# Divisions - Softball

- **SSL- Sandhills Softball League was formed and moved to North Springs Park to help grow Softball in the Richland County area.**
- All divisions are important! They all require a fielders face mask to play on defense.
- Please have your players with the appropriate equipment before assessments: Glove, fielders face mask, bat, batting helmet and cleats.
- If you are interested in Coaching in any capacity please email us at [sandhillssoftball@gmail.com](mailto:sandhillssoftball@gmail.com)
- Please follow us on FB @sandhillssoftballleague

# Divisions - Softball

- **Sweetees**
  - Low numbers so eliminated program for 2020 – depending on age: play in Rookie Ball or Darlings.
- **Darlings**
  - Need an increase of numbers to have strong presence in County. Program is very instructional and introduces the basic fundamentals.
- **Angels**
  - Kids pitch! If your child is looking to pitch/ catch please have them working in the off season. This division introduces kids to live pitching from their peers. It also teaches them to steal.
- **Pony Tails**
  - Preparing your player for High School play!

# All Stars

- Review dates on Calendar for watch list availability



- **District Dates:**

- TBD – Rookie Ball
- TBD – Coach’s Pitch
- TBD – Minors & O-Zone

- **State Dates:**

- 6/27 – Rookie (Delmae)
- 6/27- Coach Pitch (Orangeburg)
- 7/11- Minors (Georgetown)
- 7/11- Ozone (Greenwood/Florence)

- **World Series:**

- 7/16- Softball (Tioga, Louisiana)
- 7/26 – Rookie (TBD)
- 7/26- Coach Pitch (Dunn, NC)
- 8/1- Minors & Ozone ( Lexington, SC)

# Closing Ceremonies



- **Recognition**

- All Teams
- League / Tournament Winners
- Tippy Watts Effort & Attitude Award
- All Stars